

**REQUEST FOR QUOTATIONS**

**OUR REF: MMCZ/RFQ207/2023**

To: All suppliers

Closing date: 12/12/2023

Publication Date: 07/12/2023

Closing time: 10:00 hours

Return Quotation to:  
Procurement Management Unit  
MMCZ Building, 90 Mutare Road  
Msasa, Harare

Contact details  
+263 (242) - 487 200-4

ITEM	DESCRIPTION OF REQUIREMENTS	QUANTITY	MINIMUM SPECIFICATIONS
1	<p>Supply and delivery of :</p> <p><b>Trolley bag</b> <i>Branded with MMCZ logo on the lower left corner.</i></p> <p><b>NB: Bidders are required to submit samples of the bags they are quoting for on or before the closing date.</b></p>	25	<p><b>Trolley Bag Specs:</b></p> <ul style="list-style-type: none"> <li>• Overnighter case with a length of 44 cm, a height of 39 cm and a width of 26 cm.</li> <li>• Provided with a laptop sleeve that can equip laptops up to 15.6 inches in size.</li> <li>• Has an additional pocket to carry small items making it a perfect choice for an overnight business trip.</li> <li>• High-quality durable metal zippers and sliders.</li> <li>• Rotating four-wheel trolley to ensure faster mobility.</li> <li>• Suitcase to have safe lock combination function.</li> </ul> <p>Branded with MMCZ logo on the lower left corner.</p>

**NB: Your quotation must be in USD. Please find attached, a sample picture of the trolley bag**

**INSTRUCTIONS AND CONDITIONS**

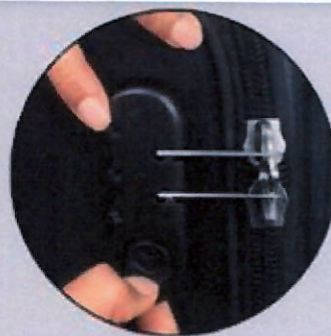
1. Current proof of registration with the Procurement Regulatory Authority of Zimbabwe in the specified category Copy (attach copy of the PRAZ registration certificate)
2. Copy of a valid Tax Clearance Certificate from ZIMRA

3. 3-day delivery period.
4. Payment is after delivery in a USD\$ nostro account (No offshore payments)
5. **Clearly, state VAT registered or Not VAT Registered NB-** All VAT registered suppliers to indicate their VAT number on the quotation.
6. Bid validity (must be **STATED** in days) (at least 30 Days)
7. Quotations must be emailed to [proc@mmc.co.zw](mailto:proc@mmc.co.zw) in pdf format.
8. **N.B Late submissions will not be accepted. MMCZ does not bind itself to accept the lowest or any tender and reserves the right to accept the whole or part of any tender.**

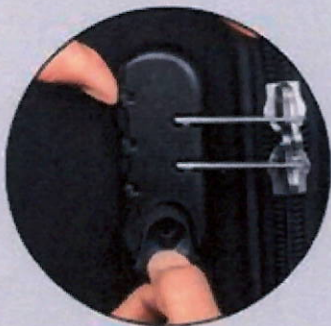




**1.** Turn the number dials to the previously set combination to "0-0-0", the factory default combination for the trolley.



**2.** Locate the reset button, usually placed to the side of the combination dials.



**3.** Press the reset button and hold it while rotating the number dials to the desired combination. Set this to a sequence easy for you to remember but hard for others to figure out.



**4.** Release the reset button after you set the numbers to the new combination.